

HSF1(Phospho-Ser307) Antibody

Catalog No: #11195



Package Size: #11195-1 50ul #11195-2 100ul #11195-4 25ul

Overview

| | |
|--------------------|-------------------------------|
| Product Name | HSF1(Phospho-Ser307) Antibody |
| Host Species | Rabbit |
| Clonality | Polyclonal |
| Applications | WB IF |
| Species Reactivity | Hu |
| Immunogen Type | Peptide-KLH |
| Target Name | HSF1 |
| Modification | Phospho-Ser307 |
| Alternative Names | HSTF 1 |

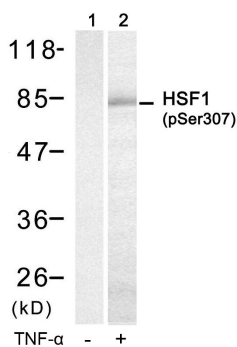
Application Details

Predicted MW: 82kd

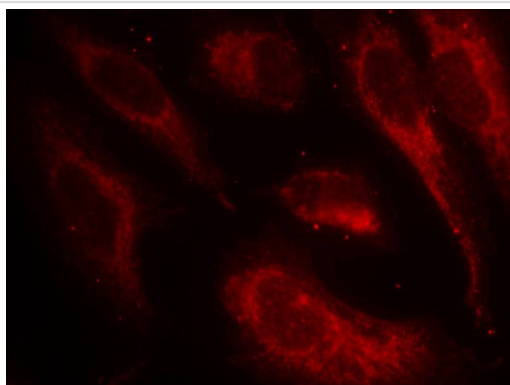
Western blotting: 1:500~1:1000

Immunofluorescence: 1:100~1:200

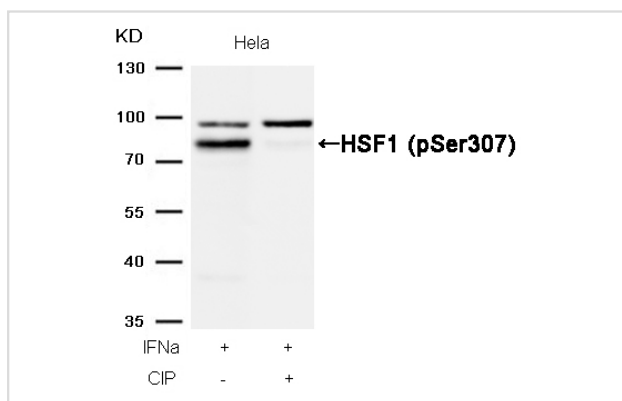
Images



Western blot analysis of extracts from HUVEC cells untreated(lane 1) or treated with TNF- α (lane 2) using HSF1(Phospho-Ser307) Antibody #11195.



Immunofluorescence staining of methanol-fixed HeLa cells using HSF1(Phospho-Ser307) Antibody #11195.



Western blot analysis of extracts from HeLa cells, treated with IFN α or calf intestinal phosphatase (CIP), using HSF1 (Phospho-Ser307) Antibody #11195.

Descriptions

| | |
|---------------|--|
| Immunogen | Peptide sequence around phosphorylation site of serine 307 (P-Q-S(p)-P-R) derived from Human HSF1. |
| Specificity | The antibody detects endogenous level of HSF1 only when phosphorylated at serine 307. |
| Purification | Antibodies were produced by immunizing rabbits with synthetic phosphopeptide and KLH conjugates. Antibodies were purified by affinity-chromatography using epitope-specific phosphopeptide. Non-phospho specific antibodies were removed by chromatography using non-phosphopeptide. |
| Formulation | Supplied at 1.0mg/mL in phosphate buffered saline (without Mg $^{2+}$ and Ca $^{2+}$), pH 7.4, 150mM NaCl, 0.02% sodium azide and 50% glycerol. |
| Storage | Store at -20°C for long term preservation (recommended). Store at 4°C for short term use. |
| Accession NO. | Swiss-Prot: Q00613NCBI Protein: NP_005517.1 |

Related Information

DNA-binding protein that specifically binds heat shock promoter elements (HSE) and activates transcription. In higher eukaryotes, HSF is unable to bind to the HSE unless the cells are heat shocked.

Guettouche T, et al. (2005) BMC Biochem ; 6(1): 4

Wang X, et al. (2003) Mol Cell Biol ; 23(17): 6013-6026

Jolly C, et al. (1999) Proc Natl Acad Sci USA; 96(12): 6769-6774.

Note: This product is for in vitro research use only and is not intended for use in humans or animals.