

TFE3 Antibody

Catalog No: #21431



Package Size: #21431-1 50ul #21431-2 100ul #21431-4 25ul

Overview

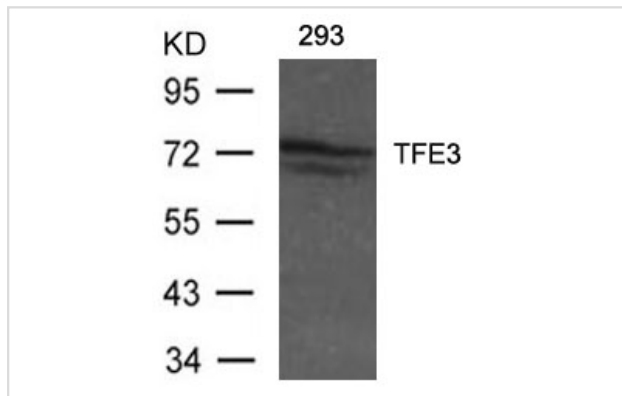
Product Name	TFE3 Antibody
Host Species	Rabbit
Clonality	Polyclonal
Applications	WB
Species Reactivity	Human Mouse Rat
Immunogen Type	Peptide-KLH
Target Name	TFE3
Alternative Names	BHLHE33; TFEA; RCCP2

Application Details

Predicted MW: 70kd

Western blotting: 1:500~1:1000

Images



Western blot analysis of extracts from 293 cells using TFE3 Antibody #21431.

Descriptions

Immunogen	Peptide sequence around aa.303~307 (L-D-V-Y-S) derived from Human TFE3.
Specificity	The antibody detects endogenous levels of total TFE3 protein.
Purification	Antibodies were produced by immunizing rabbits with synthetic peptide and KLH conjugates. Antibodies were purified by affinity-chromatography using epitope-specific peptide.
Formulation	Supplied at 1.0mg/mL in phosphate buffered saline (without Mg ²⁺ and Ca ²⁺), pH 7.4, 150mM NaCl, 0.02% sodium azide and 50% glycerol.
Storage	Store at -20°C for long term preservation (recommended). Store at 4°C for short term use.
Accession NO.	Swiss-Prot: P19532NCBI Protein: NP_006512.2

Related Information

Transcription factor that specifically recognizes and binds E-box sequences (3'-CANNTG-5'). Efficient DNA-binding requires dimerization with itself or with another MIT/TFE family member such as TFEB or MITF. In association with TFEB, activates the expression of CD40L in T-cells, thereby playing a role in T-cell-dependent antibody responses in activated CD4+ T-cells and thymus-dependent humoral immunity. Specifically recognizes the MUE3 box, a subset of E-boxes, present in the immunoglobulin enhancer. It also binds very well to a USF/MLTF site.

Clark J., Lu Y.-J., Sidhar S.K., Parker C., Gill S. *Oncogene* 15:2233-2239(1997) Weterman M.A.J., Wilbrink M., *Proc. Natl. Acad. Sci. U.S.A.* 93:15294-15298(1996)

Note: This product is for in vitro research use only and is not intended for use in humans or animals.