

## OCT-4 Antibody

Catalog No: #21424



Package Size: #21424-1 50ul #21424-2 100ul #21424-4 25ul

## Overview

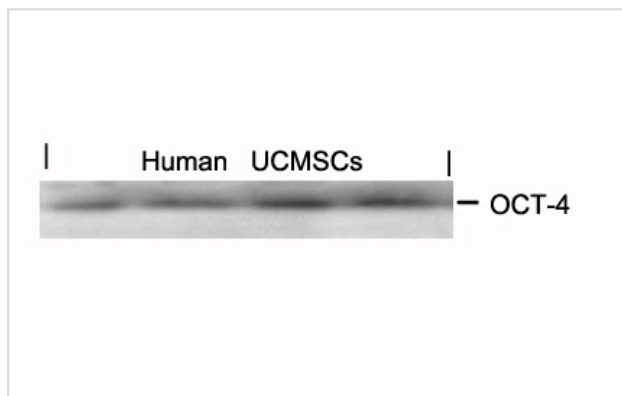
Product Name	OCT-4 Antibody
Host Species	Rabbit
Clonality	Polyclonal
Applications	WB
Species Reactivity	Hu
Immunogen Type	Peptide-KLH
Target Name	OCT-4
Alternative Names	Otc3; OTF3; OTF4; OTF-3;

## Application Details

Predicted MW: 45kd

Western blotting: 1:1000

## Images



Western blot analysis of extracts from human Umbilical cord mesenchymal stem cell using OCT-4 Antibody #21424.

## Descriptions

Immunogen	Peptide sequence around aa.232~236 (R-K-R-T-S) derived from OCT-4
Specificity	The antibody detects endogenous level of total OCT-4 protein.
Purification	Antibodies were produced by immunizing rabbits with synthetic peptide and KLH conjugates. Antibodies were purified by affinity-chromatography using epitope-specific peptide.
Formulation	Supplied at 1.0mg/mL in phosphate buffered saline (without Mg <sup>2+</sup> and Ca <sup>2+</sup> ), pH 7.4, 150mM NaCl, 0.02% sodium azide and 50% glycerol.
Storage	Store at -20°C for long term preservation (recommended). Store at 4°C for short term use.
Accession NO.	Swiss-Prot: Q01860NCBI Protein: NP_002692.2

## Related Information

---

Transcription factor that binds to the octamer motif (5'-ATTTGCAT-3'). Forms a trimeric complex with SOX2 on DNA and controls the expression of a number of genes involved in embryonic development such as YES1, FGF4, UTF1 and ZFP206. Critical for early embryogenesis and for embryonic stem cell pluripotency

Pesce, M. and Scholer, H.R. (2001) *Stem Cells* 19, 271-278.

Pan, G. and Thomson, J.A. (2007) *Cell Res* 17, 42-9.

Cauffman, G. et al. (2006) *Stem Cells* 24, 2685-91.

---

Note: This product is for in vitro research use only and is not intended for use in humans or animals.