

## BMAL1 Antibody

Catalog No: #21415



Package Size: #21415-1 50ul #21415-2 100ul #21415-4 25ul

## Overview

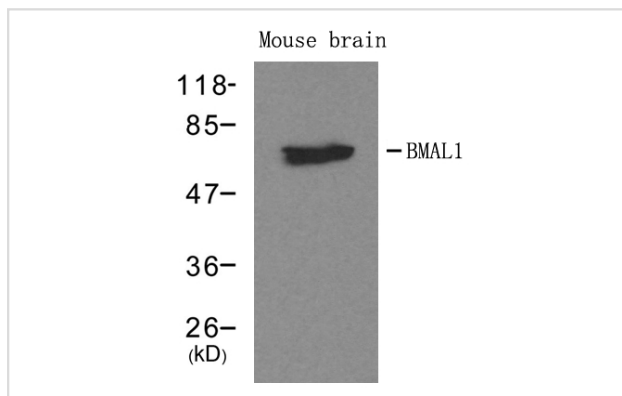
Product Name	BMAL1 Antibody
Host Species	Rabbit
Clonality	Polyclonal
Applications	WB
Species Reactivity	Hu Ms Rt
Immunogen Type	Peptide-KLH
Target Name	BMAL1
Alternative Names	MOP3; BMAL1c; ARNTL; TIC;

## Application Details

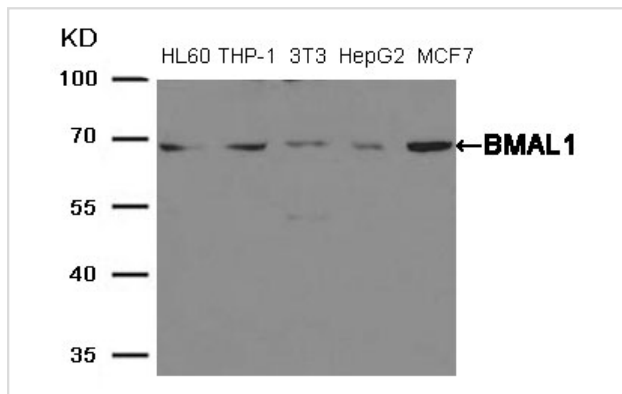
Predicted MW: 69kd

Western blotting: 1:500~1:1000

## Images



Western blot analysis of extracts from mouse brain tissue using BMAL1 antibody #21415.



Western blot analysis of extracts from HL60y • THP-1y • 3T3y • HepG2 and MCF7 cells using BMAL1 antibody #21415.

## Descriptions

Immunogen

Peptide sequence around aa.569~573 (S-S-S-I-L) derived from Human BMAL1.

Specificity	The antibody detects endogenous level of total BMAL1 protein.
Purification	Antibodies were produced by immunizing rabbits with synthetic peptide and KLH conjugates. Antibodies were purified by affinity-chromatography using epitope-specific peptide.
Formulation	Supplied at 1.0mg/mL in phosphate buffered saline (without Mg <sup>2+</sup> and Ca <sup>2+</sup> ), pH 7.4, 150mM NaCl, 0.02% sodium azide and 50% glycerol.
Storage	Store at -20°C for long term preservation (recommended). Store at 4°C for short term use.
Accession NO.	Swiss-Prot: O00327 NCBI Protein: NP_001025443.1

## Related Information

ARNTL-CLOCK heterodimers activate E-box element (3'-CACGTG-5') transcription of a number of proteins of the circadian clock. This transcription is inhibited in a feedback loop by PER, and also by CRY proteins

Lee S, et al. (2010) PLoS One.5(6):e10995.

Wang J, et al. (2010) Biosystems.101(2):136-43.

Jung-Hynes ,et al. (2010) J Pineal Res.49(1):60-8.

Note: This product is for in vitro research use only and is not intended for use in humans or animals.