

Melanoma-associated antigen D1 Antibody

Catalog No: #21408



Package Size: #21408-1 50ul #21408-2 100ul #21408-4 25ul

Overview

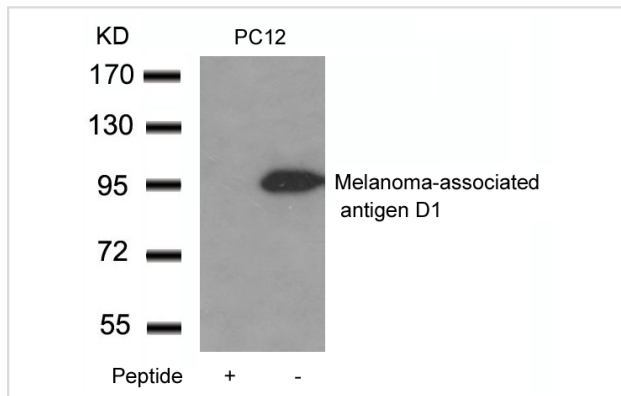
Product Name	Melanoma-associated antigen D1 Antibody
Host Species	Rabbit
Clonality	Polyclonal
Applications	WB
Species Reactivity	Ms Rt
Immunogen Type	Peptide-KLH
Target Name	Melanoma-associated antigen D1
Alternative Names	MAGED1

Application Details

Predicted MW: 95kd

Western blotting: 1:500~1:1000

Images



Western blot analysis of extracts from PC12 cells using Melanoma-associated antigen D1 Antibody #21408 and the same antibody preincubated with blocking peptide.

Descriptions

Immunogen	Peptide with sequence C-EAEARAEARNRMGIGDE derived from Mouse Melanoma-associated antigen D1.
Specificity	The antibody detects endogenous level of total Melanoma-associated antigen D1 protein.
Purification	Antibodies were produced by immunizing rabbits with synthetic peptide and KLH conjugates. Antibodies were purified by affinity-chromatography using epitope-specific peptide.
Formulation	Supplied at 1.0mg/mL in phosphate buffered saline (without Mg ²⁺ and Ca ²⁺), pH 7.4, 150mM NaCl, 0.02% sodium azide and 50% glycerol.
Storage	Store at -20°C for long term preservation (recommended). Store at 4°C for short term use.
Accession NO.	Swiss-Prot: Q9QYH6 NCBI Protein: NP_062765.1

Related Information

Involved in the apoptotic response after nerve growth factor (NGF) binding in neuronal cells. Binds p75NTR and antagonizes its association with TrkA, inhibits cell cycle progression, and facilitates p75NTR-mediated apoptosis. May act as a regulator of the function of DLX family members. May regulate p53 transcriptional activity and inhibit cell proliferation. Enhances p53 phosphorylation and accumulation.

Zhao Z,et al.(2002) *Sci China C Life Sci.*45(4):412-20.

Shen WG,et al.(2007) *Cell Commun Adhes.* 14(1):21-31.

Cheresh DA,et al. (1984) *J Biol Chem.*259(12):7453-9.

Note: This product is for in vitro research use only and is not intended for use in humans or animals.