

# Lymphatic vessel endothelial hyaluronic acid receptor 1 Antibody



Catalog No: #21407

Package Size: #21407-1 50ul #21407-2 100ul #21407-4 25ul

## Overview

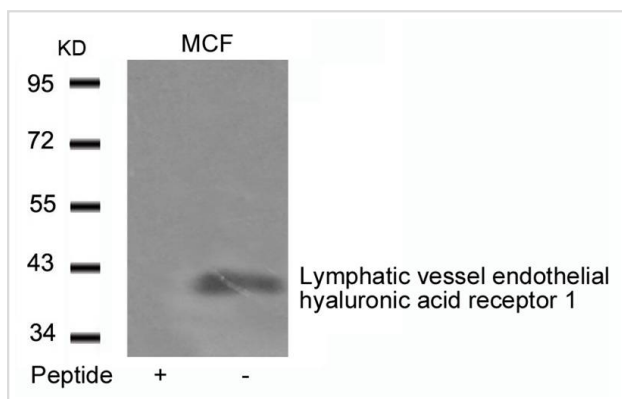
Product Name	Lymphatic vessel endothelial hyaluronic acid receptor 1 Antibody
Host Species	Rabbit
Clonality	Polyclonal
Applications	WB
Species Reactivity	Hu Ms Rt
Immunogen Type	Peptide-KLH
Target Name	Lymphatic vessel endothelial hyaluronic acid receptor 1
Alternative Names	LYVE1

## Application Details

Predicted MW: 40kd

Western blotting: 1:500~1:1000

## Images



Western blot analysis of extracts from MCF cells using Lymphatic vessel endothelial hyaluronic acid receptor 1 Antibody #21407 and the same antibody preincubated with blocking peptide.

## Descriptions

Immunogen	Peptide sequence around aa.271~275 (K-N-Q-Q-K) derived from Human Lymphatic vessel endothelial hyaluronic acid receptor 1.
Specificity	The antibody detects endogenous level of total Lymphatic vessel endothelial hyaluronic acid receptor 1 protein.
Purification	Antibodies were produced by immunizing rabbits with synthetic peptide and KLH conjugates. Antibodies were purified by affinity-chromatography using epitope-specific peptide.
Formulation	Supplied at 1.0mg/mL in phosphate buffered saline (without Mg <sup>2+</sup> and Ca <sup>2+</sup> ), pH 7.4, 150mM NaCl, 0.02% sodium azide and 50% glycerol.
Storage	Store at -20°C for long term preservation (recommended). Store at 4°C for short term use.

## Related Information

Ligand-specific transporter trafficking between intracellular organelles (TGN) and the plasma membrane. Plays a role in autocrine regulation of cell growth mediated by growth regulators containing cell surface retention sequence binding (CRS). May act as an hyaluronan (HA) transporter, either mediating its uptake for catabolism within lymphatic endothelial cells themselves, or its transport into the lumen of afferent lymphatic vessels for subsequent re-uptake and degradation in lymph nodes.

Heindl LM, et al. (2010) *Ophthalmology*.117(2):334-42.

He P et al.(2006) *Lin Chuang Er Bi Yan Hou Ke Za Zhi*.20(18):828-30, 833.

Lim HY,et al. (2009) *Am J Pathol*.175(3):1328-37.

**Note:** This product is for in vitro research use only and is not intended for use in humans or animals.