

## Niban-like protein(Ab-712) Antibody

Catalog No: #21332



Package Size: #21332-1 50ul #21332-2 100ul #21332-4 25ul

## Overview

Product Name	Niban-like protein(Ab-712) Antibody
Host Species	Rabbit
Clonality	Polyclonal
Applications	WB IF
Species Reactivity	Human Mouse
Immunogen Type	Peptide-KLH
Target Name	Niban-like protein

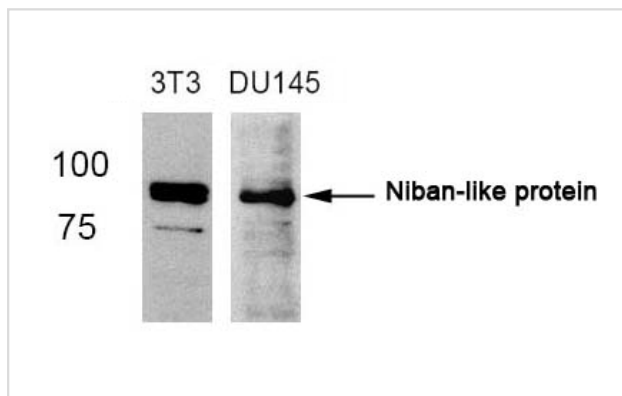
## Application Details

Predicted MW: 82kd

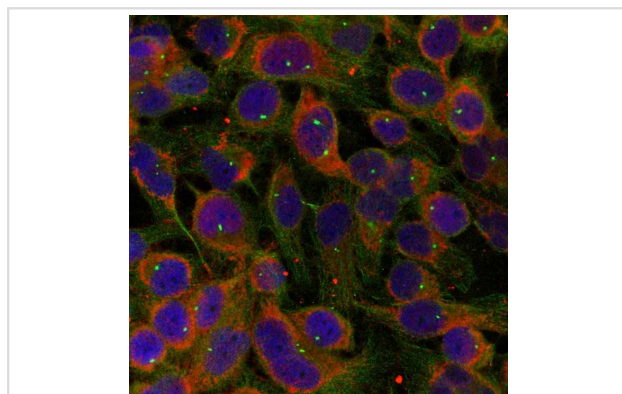
Western blotting: 1:500~1:1000

Immunofluorescence: 1:100~1:200

## Images



Western blot analysis of extracts from 3T3 and DU145 cells using Niban-like protein(Ab-712) antibody #21332.



Immunofluorescence staining of methanol-fixed HeLa cells using Niban-like protein(Ab-712) antibody #21332.

## Descriptions

Immunogen Peptide sequence around aa.710~714 (Q-V-S-S-P) derived from Human Niban-like protein.

Specificity	The antibody detects endogenous level of total Niban-like protein. 1protein.
Purification	Antibodies were produced by immunizing rabbits with synthetic peptide and KLH conjugates. Antibodies were purified by affinity-chromatography using epitope-specific peptide.
Formulation	Supplied at 1.0mg/mL in phosphate buffered saline (without Mg <sup>2+</sup> and Ca <sup>2+</sup> ), pH 7.4, 150mM NaCl, 0.02% sodium azide and 50% glycerol.
Storage	Store at -20°C for long term preservation (recommended). Store at 4°C for short term use.
Accession NO.	Swiss-Prot: Q96TA1NCBI Protein: NP_001030611.1

## Related Information

a maternal imprinting gene. May possess growth suppressor activity. Two major alternatively spliced isoforms have been described. forms. One form, Meg3-proximal (Meg3p), contains exons 1-3. The second form, Meg3-distal (Meg3d) did not contain exons 1-3 and was present in oocytes and in 1- and 2-cell embryos

Adachi H, Majima S, et al. *Oncogene*. 2004 Apr 22;23(19):3495-500

Matsumoto F, Fujii H, et al. *Hum Pathol*. 2006 Dec; 37(12):1592-600.

Note: This product is for in vitro research use only and is not intended for use in humans or animals.